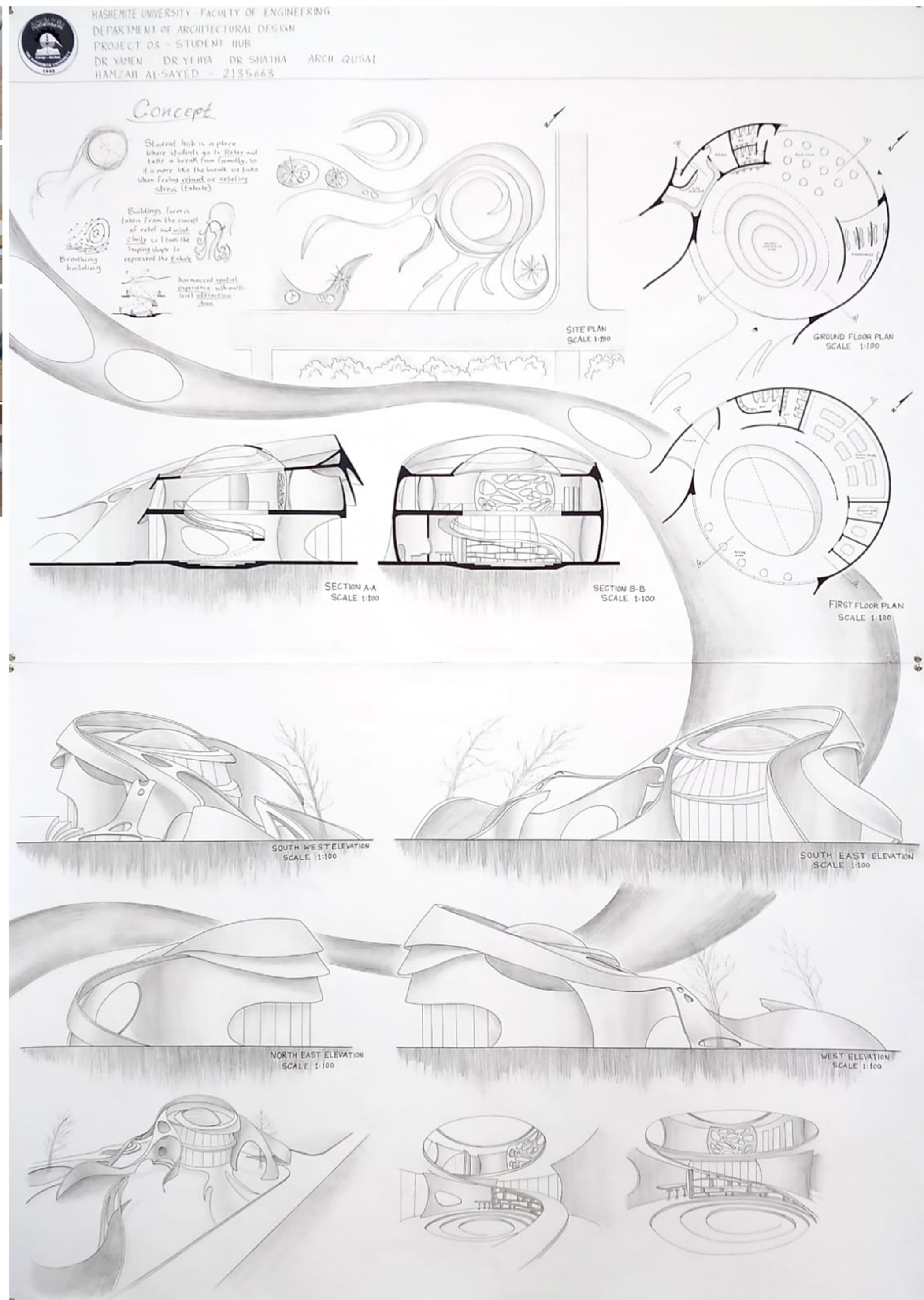


### PROJECT DESCRIPTION

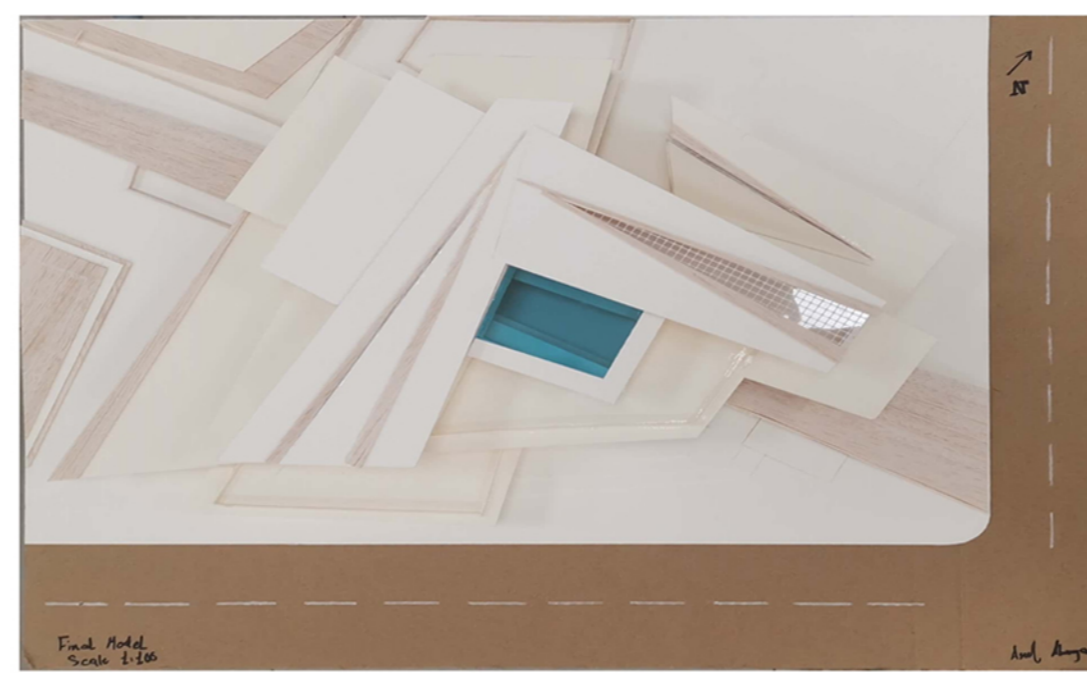
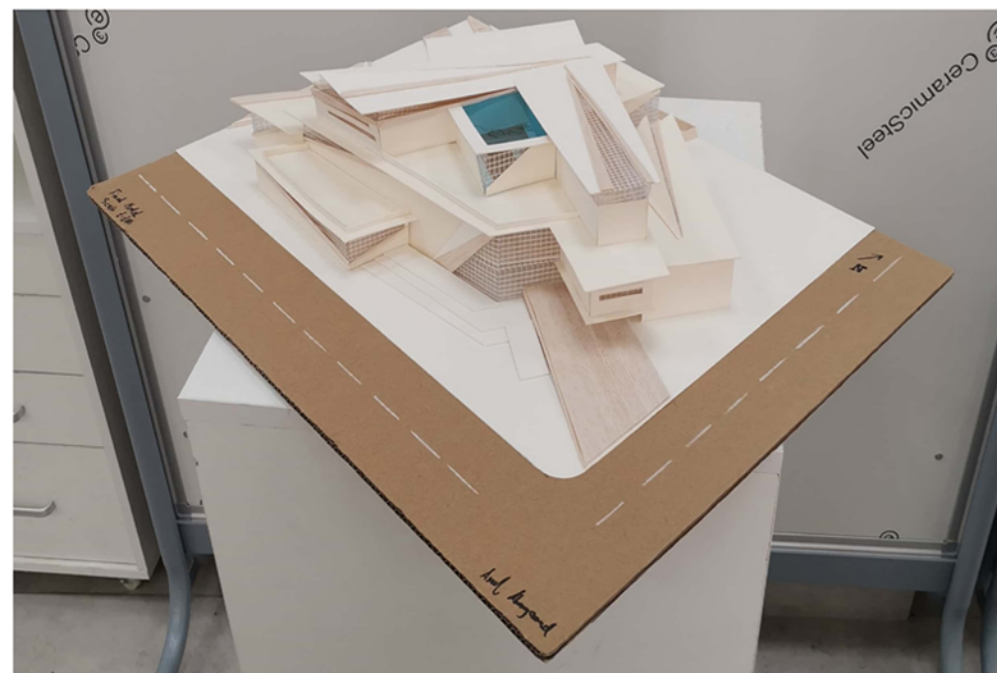
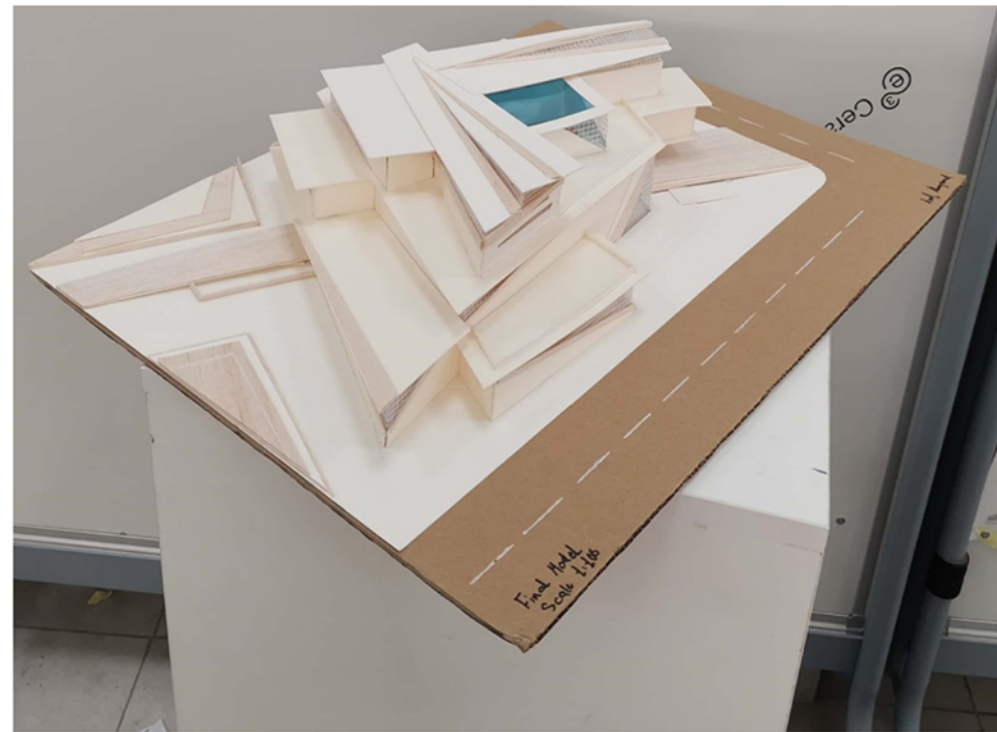
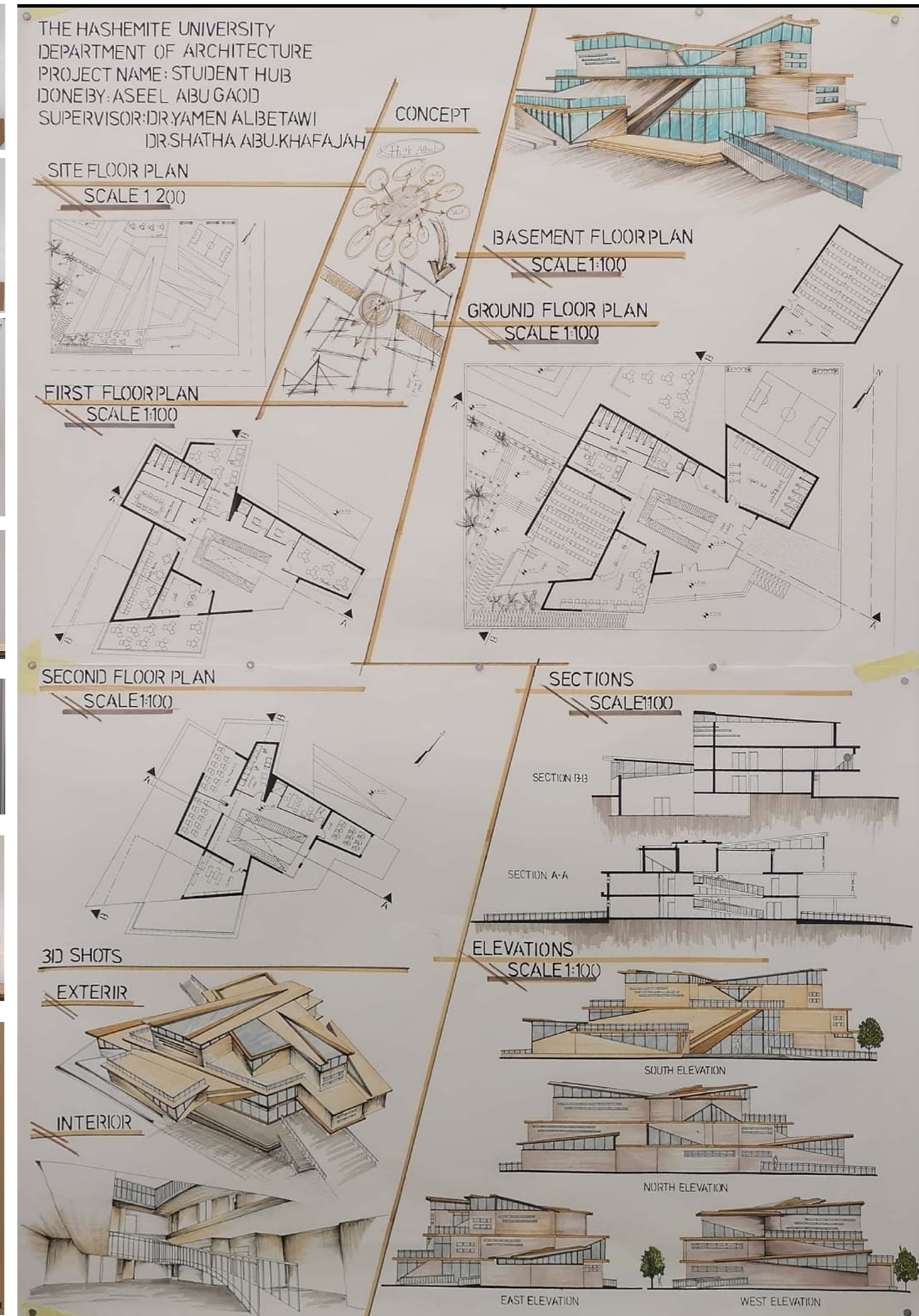
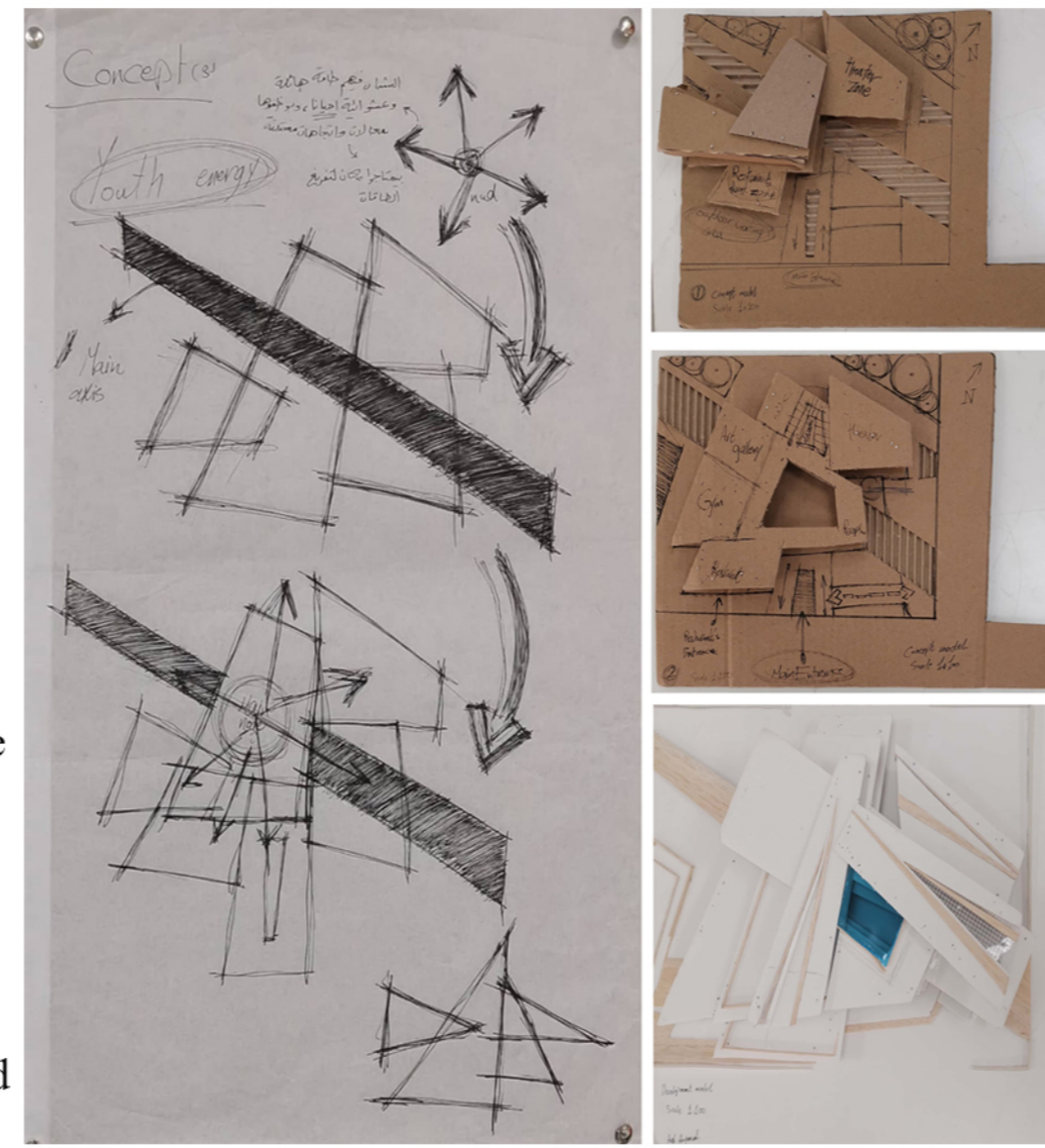
The student center or hub is an integral part of university life that provides services and amenities that students or campus members need in their daily life. Serving the important role as the campus's community centre, a student centre basically represents how the university treats and regards its students. It should be understood as a community centre at its best, reflecting the range of programs, activities, services and accomplishments available for students. A student centre is best explained as a physical facility that makes possible an informal program that complements the university's formal academic program. The concept of the student center has grown out of as a social centre and hub of student affairs on campus. It is provided as an integral part of university life as part of the educational program of the college and is a common meeting ground. Such facility is normally intended to create opportunities for connection and community building among students, and probably between students and staff by offering meeting and socializing space of a variety of sizes and types. Numerous terraces, seating areas, gathering spaces, and study lounges are located throughout the facility both inside and outside. Additionally, a batch of services including retails, printing and copying services, restaurants, study areas, meeting rooms, and activity halls are also to be presented.

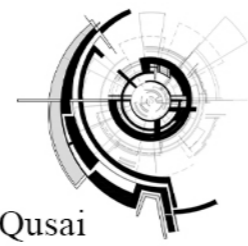




### PROJECT DESCRIPTION

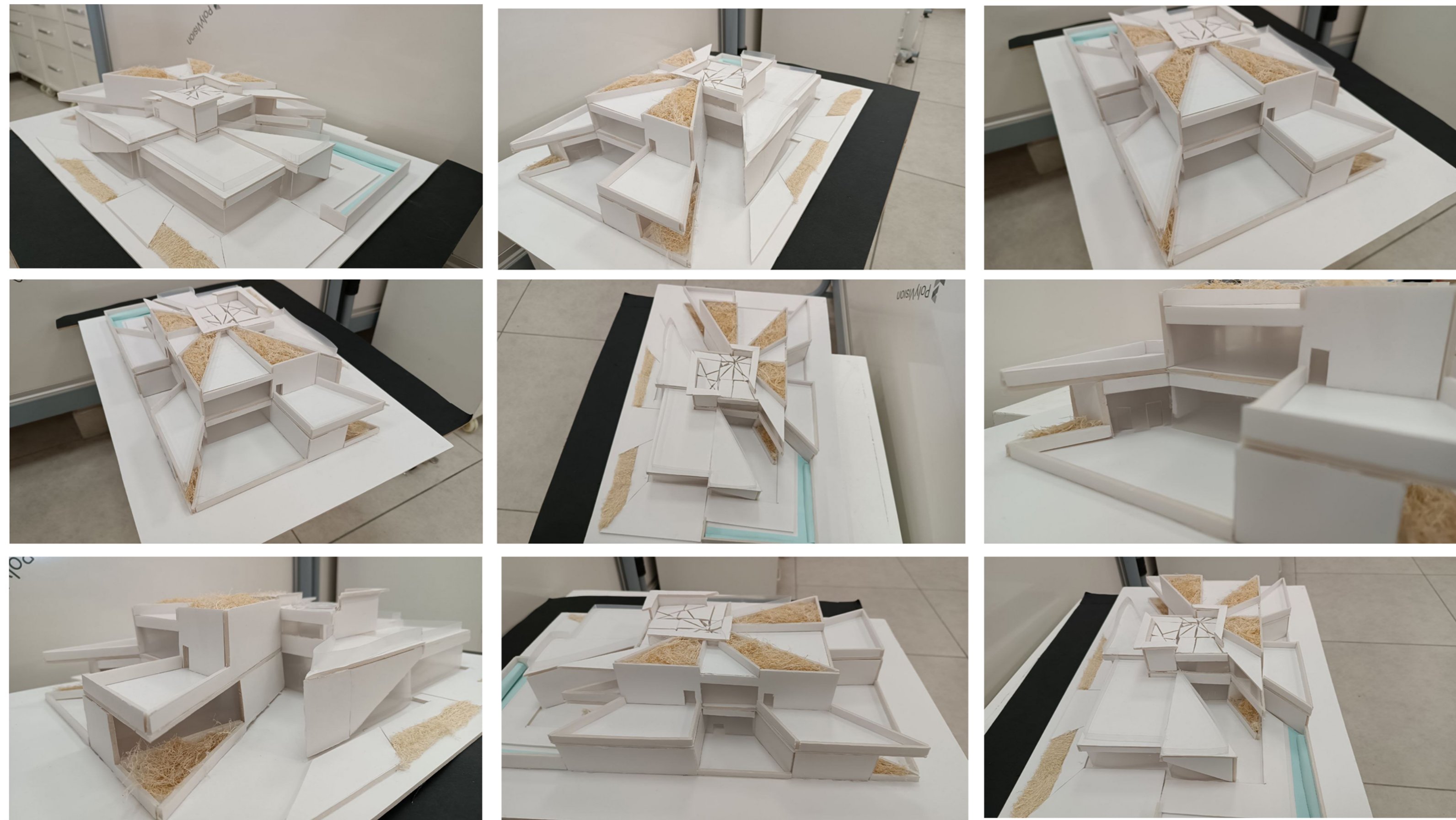
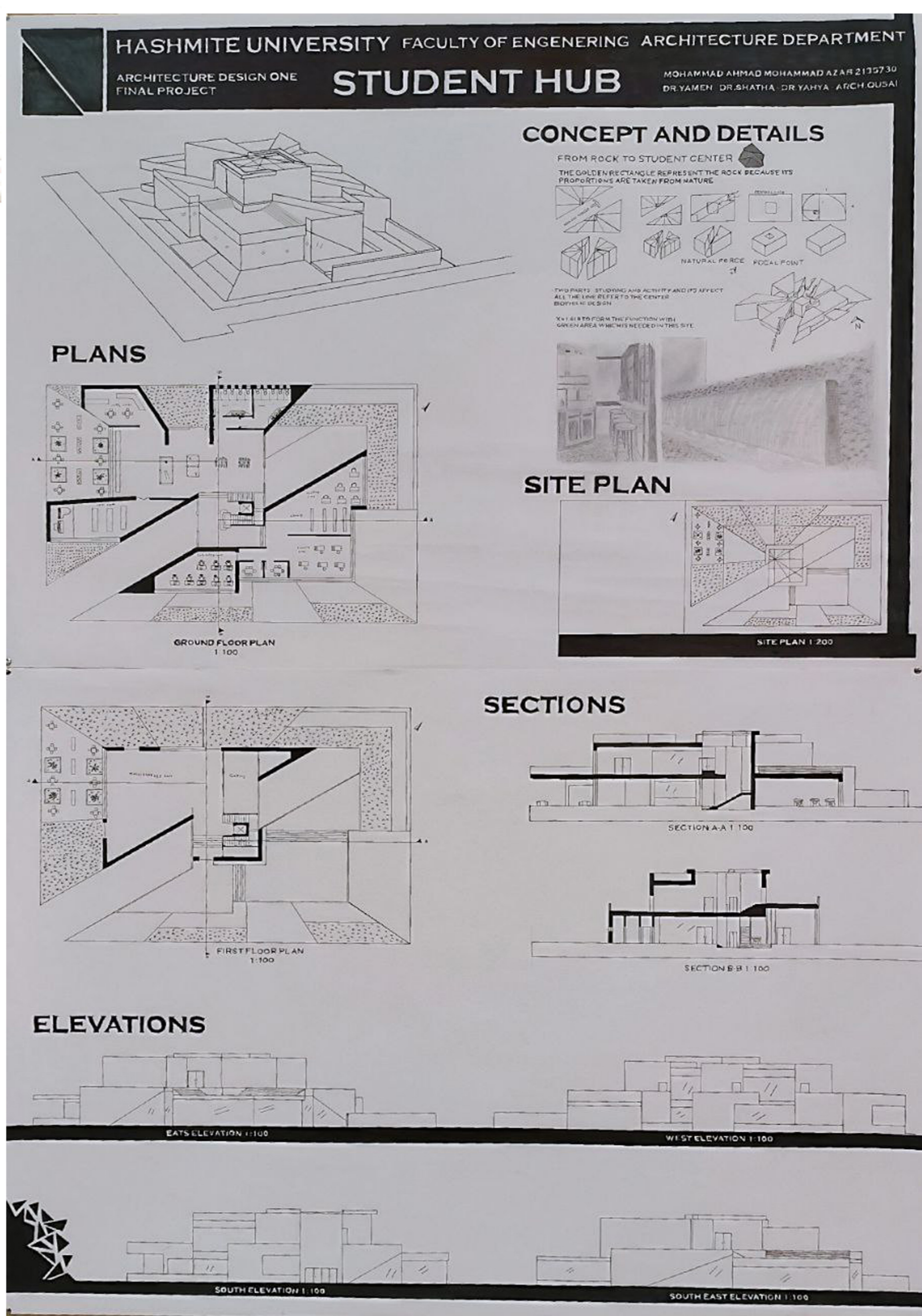
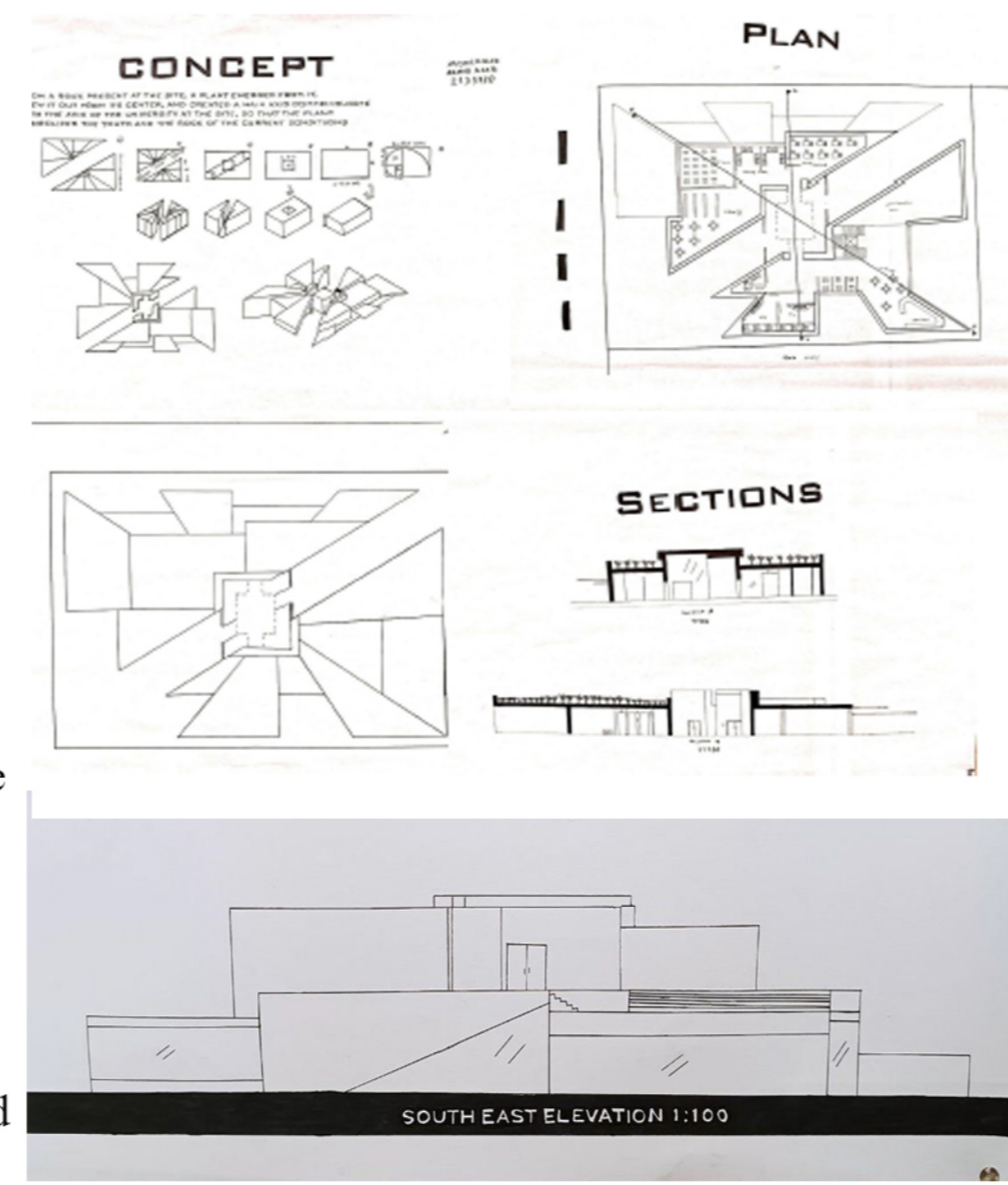
The student center or hub is an integral part of university life that provides services and amenities that students or campus members need in their daily life. Serving the important role as the campus's community centre, a student centre basically represents how the university treats and regards its students. It should be understood as a community centre at its best, reflecting the range of programs, activities, services and accomplishments available for students. A student centre is best explained as a physical facility that makes possible an informal program that complements the university's formal academic program. The concept of the student center has grown out of as a social centre and hub of student affairs on campus. It is provided as an integral part of university life as part of the educational program of the college and is a common meeting ground. Such facility is normally intended to create opportunities for connection and community building among students, and probably between students and staff by offering meeting and socializing space of a variety of sizes and types. Numerous terraces, seating areas, gathering spaces, and study lounges are located throughout the facility both inside and outside. Additionally, a batch of services including retails, printing and copying services, restaurants, study areas, meeting rooms, and activity halls are also to be presented.

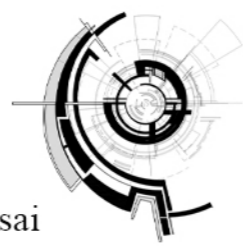




### PROJECT DESCRIPTION

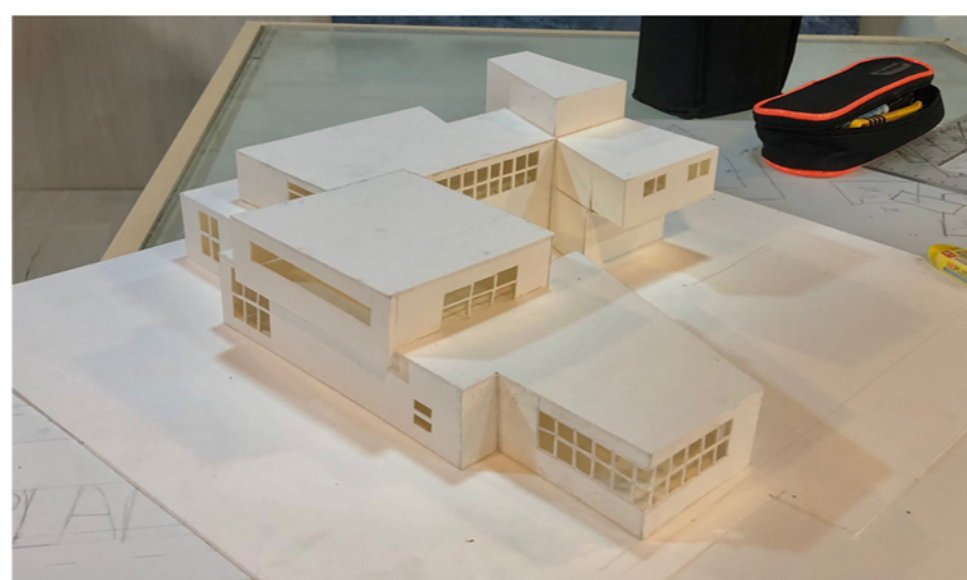
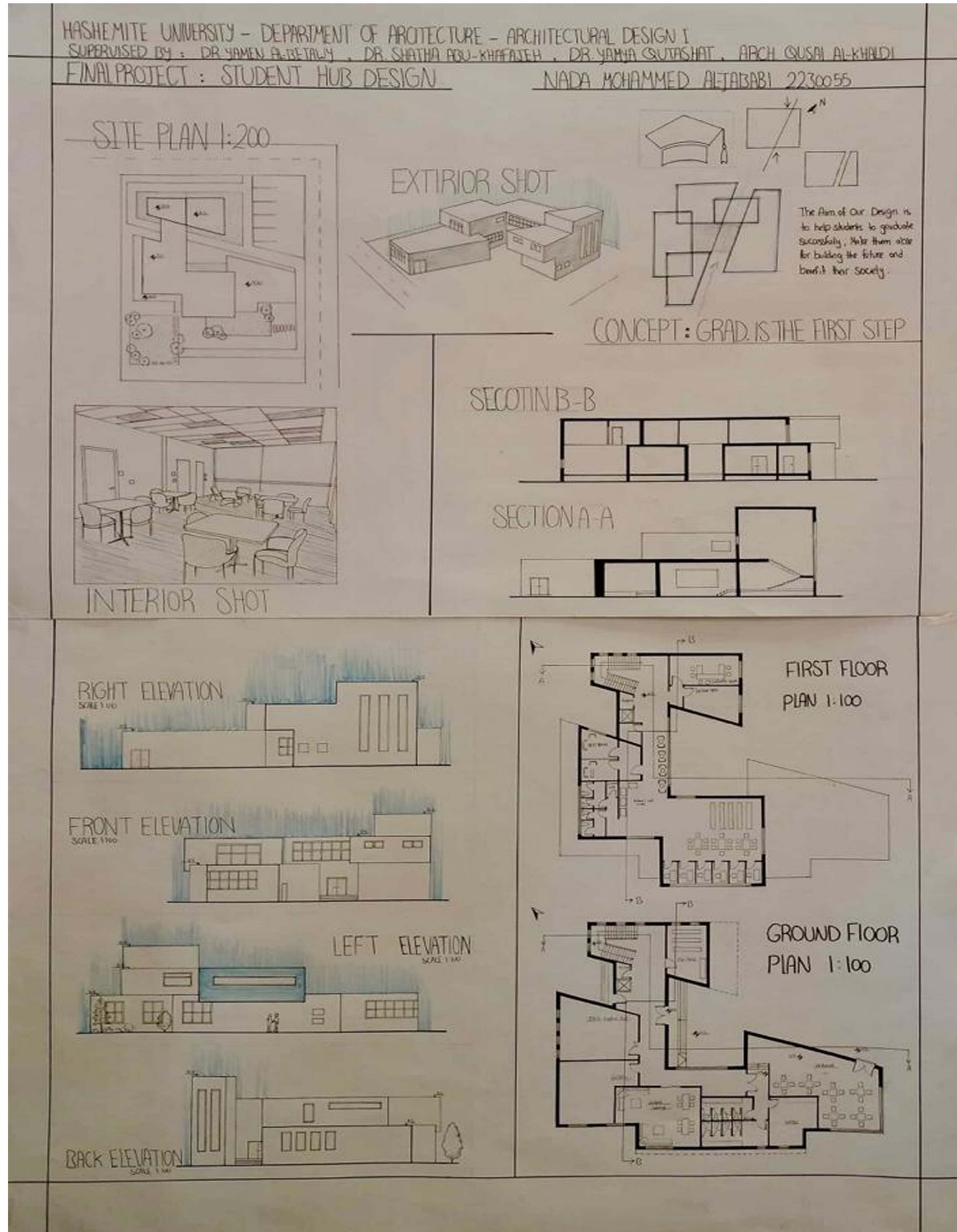
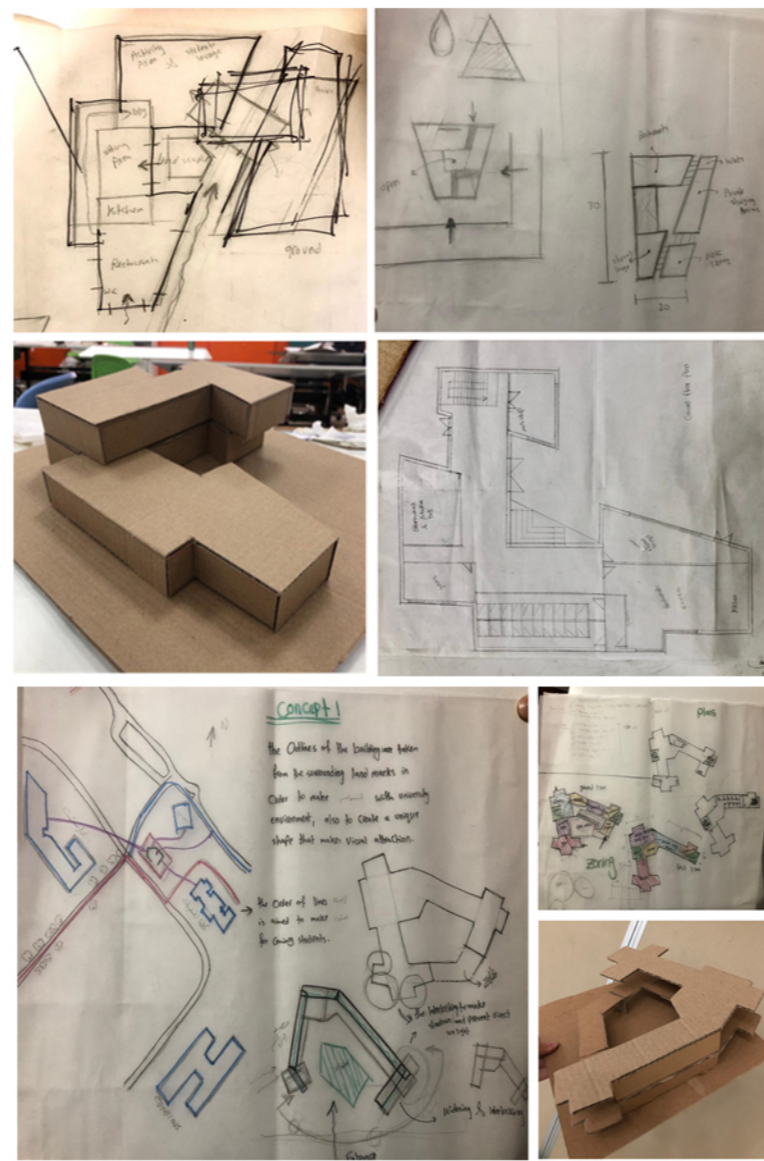
The student center or hub is an integral part of university life that provides services and amenities that students or campus members need in their daily life. Serving the important role as the campus's community centre, a student centre basically represents how the university treats and regards its students. It should be understood as a community centre at its best, reflecting the range of programs, activities, services and accomplishments available for students. A student centre is best explained as a physical facility that makes possible an informal program that complements the university's formal academic program. The concept of the student center has grown out of as a social centre and hub of student affairs on campus. It is provided as an integral part of university life as part of the educational program of the college and is a common meeting ground. Such facility is normally intended to create opportunities for connection and community building among students, and probably between students and staff by offering meeting and socializing space of a variety of sizes and types. Numerous terraces, seating areas, gathering spaces, and study lounges are located throughout the facility both inside and outside. Additionally, a batch of services including retails, printing and copying services, restaurants, study areas, meeting rooms, and activity halls are also to be presented.

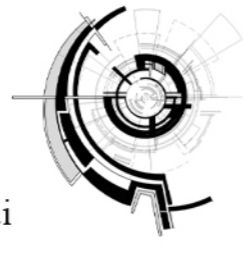




### PROJECT DESCRIPTION

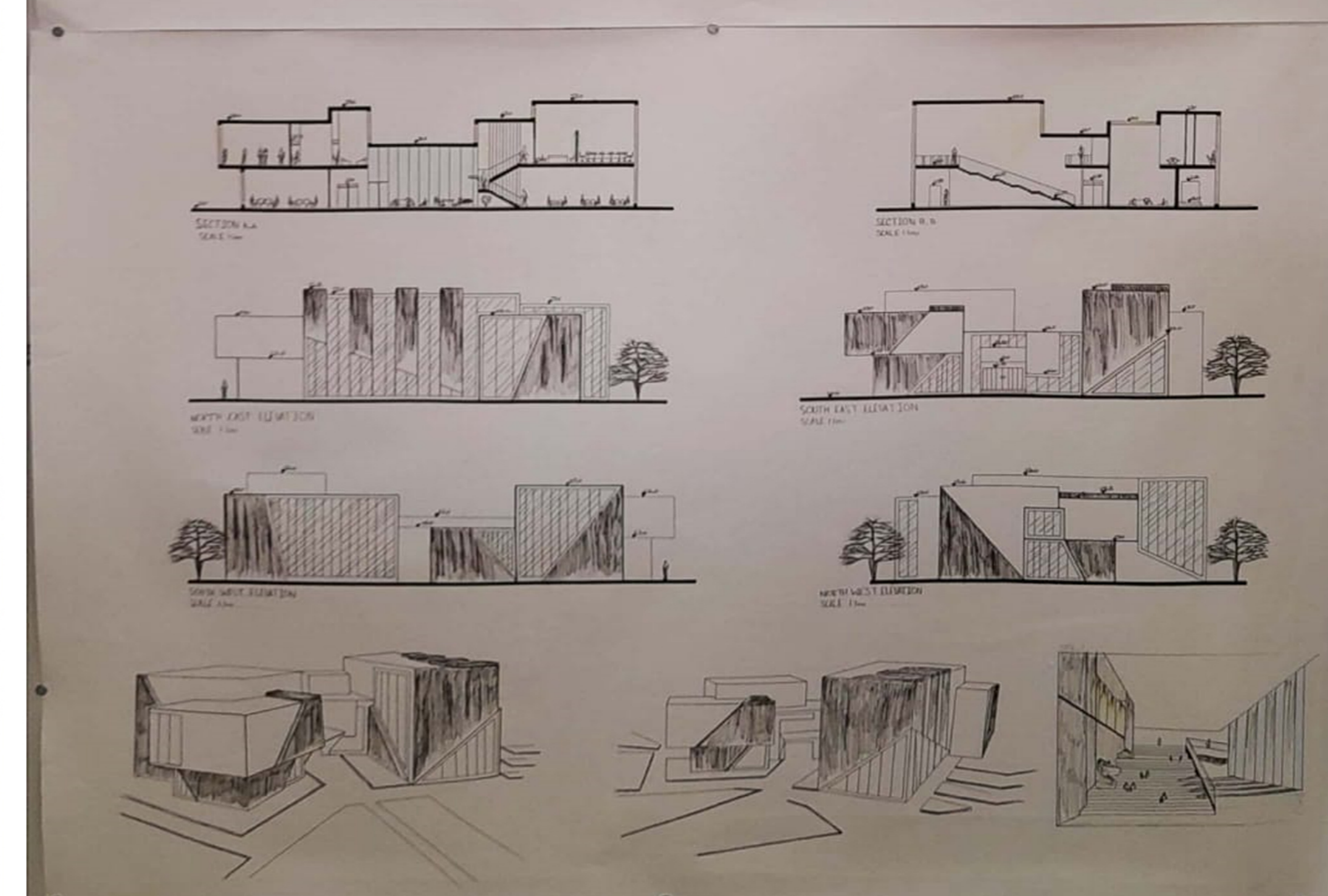
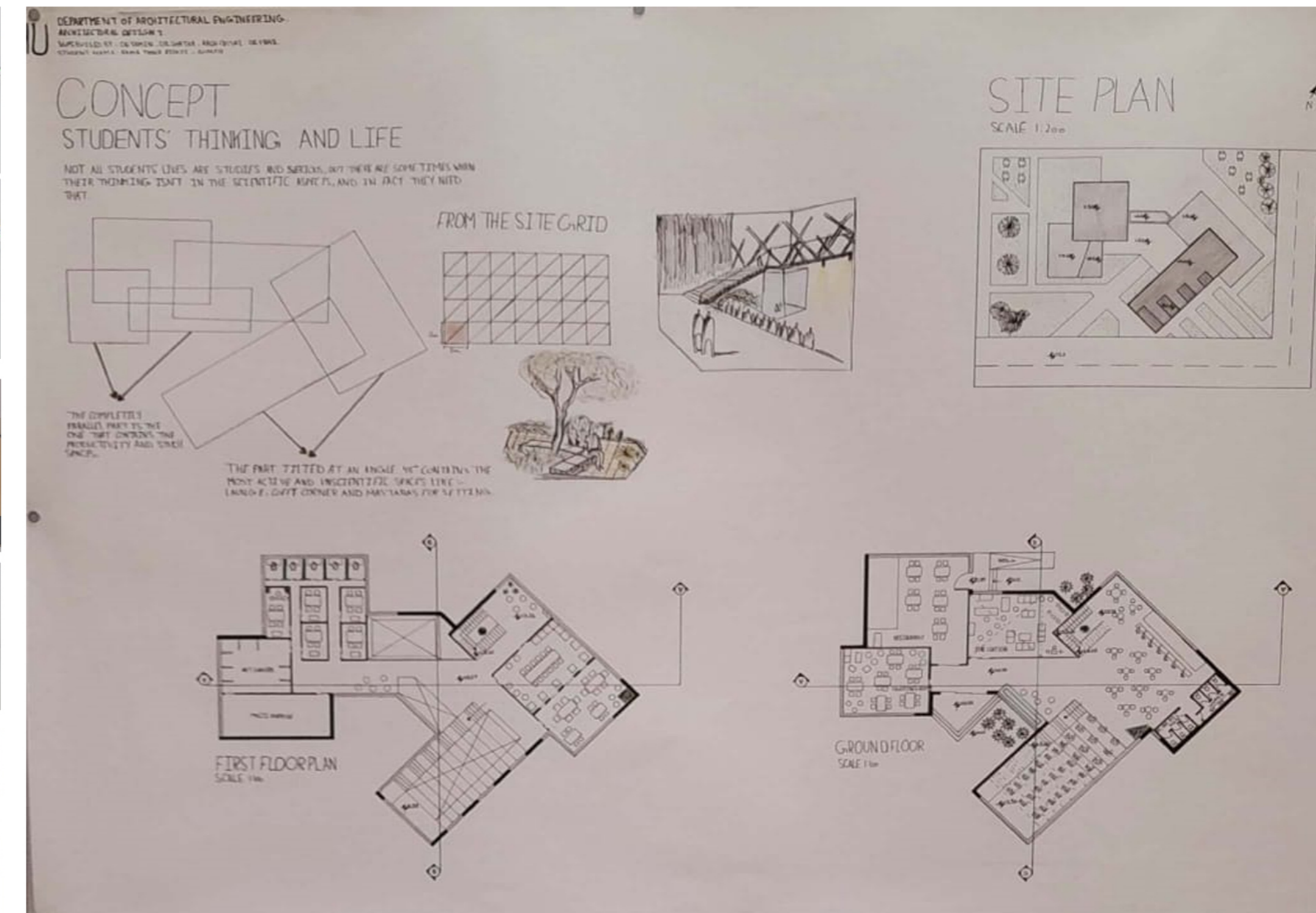
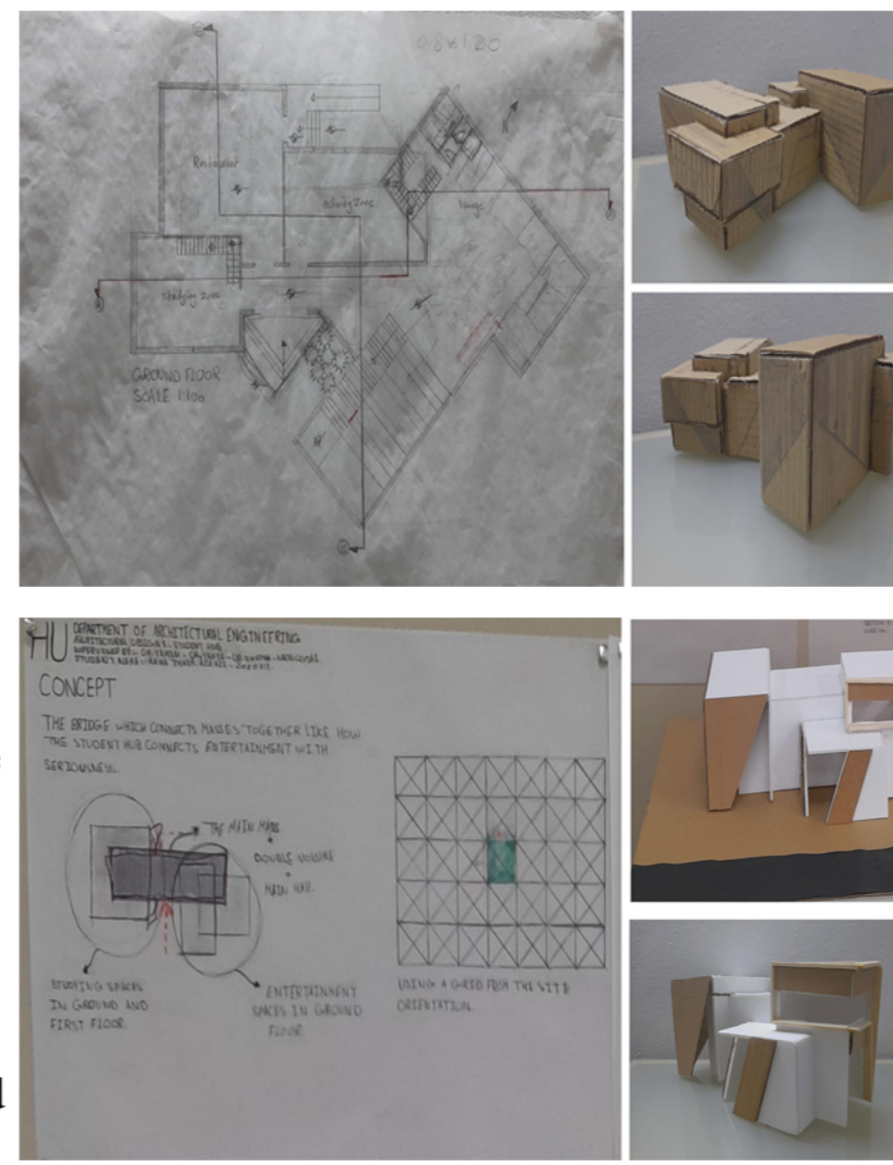
The student center or hub is an integral part of university life that provides services and amenities that students or campus members need in their daily life. Serving the important role as the campus's community centre, a student centre basically represents how the university treats and regards its students. It should be understood as a community centre at its best, reflecting the range of programs, activities, services and accomplishments available for students. A student centre is best explained as a physical facility that makes possible an informal program that complements the university's formal academic program. The concept of the student center has grown out of as a social centre and hub of student affairs on campus. It is provided as an integral part of university life as part of the educational program of the college and is a common meeting ground. Such facility is normally intended to create opportunities for connection and community building among students, and probably between students and staff by offering meeting and socializing space of a variety of sizes and types. Numerous terraces, seating areas, gathering spaces, and study lounges are located throughout the facility both inside and outside. Additionally, a batch of services including retails, printing and copying services, restaurants, study areas, meeting rooms, and activity halls are also to be presented.

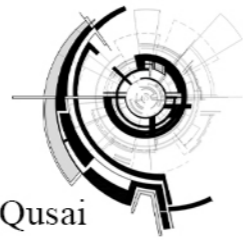




### PROJECT DESCRIPTION

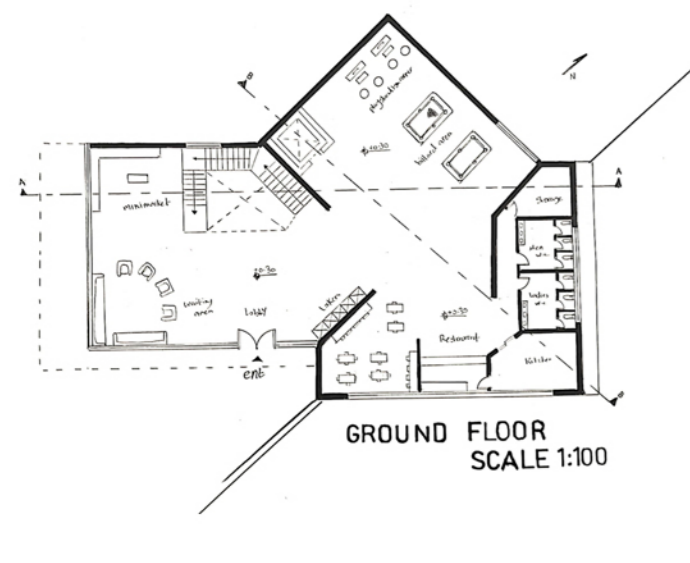
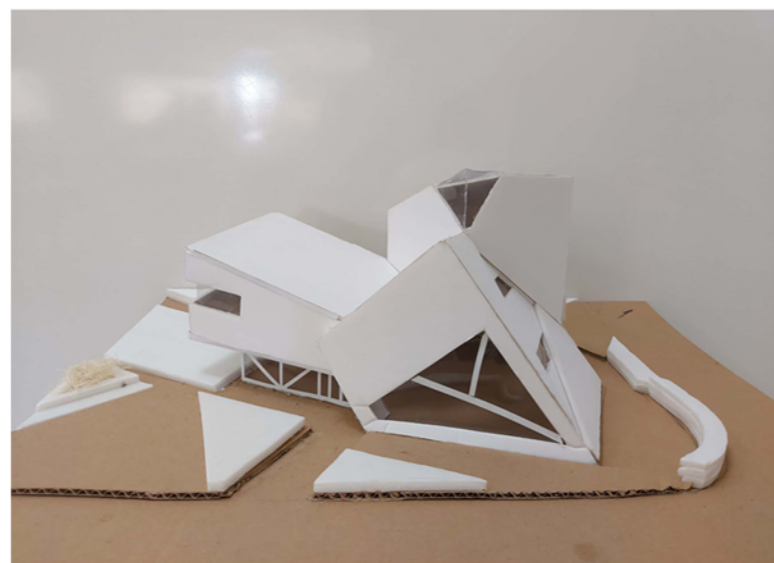
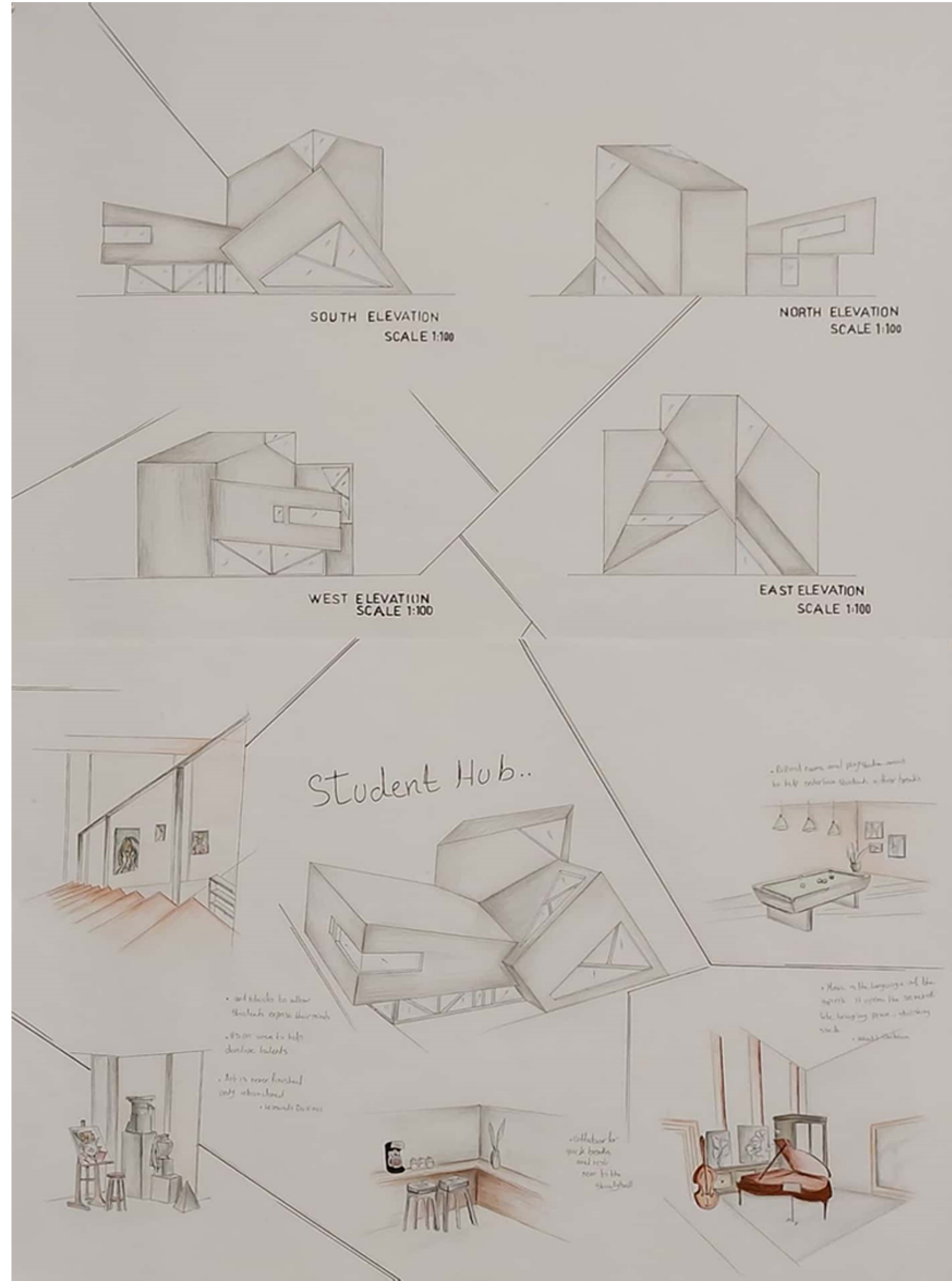
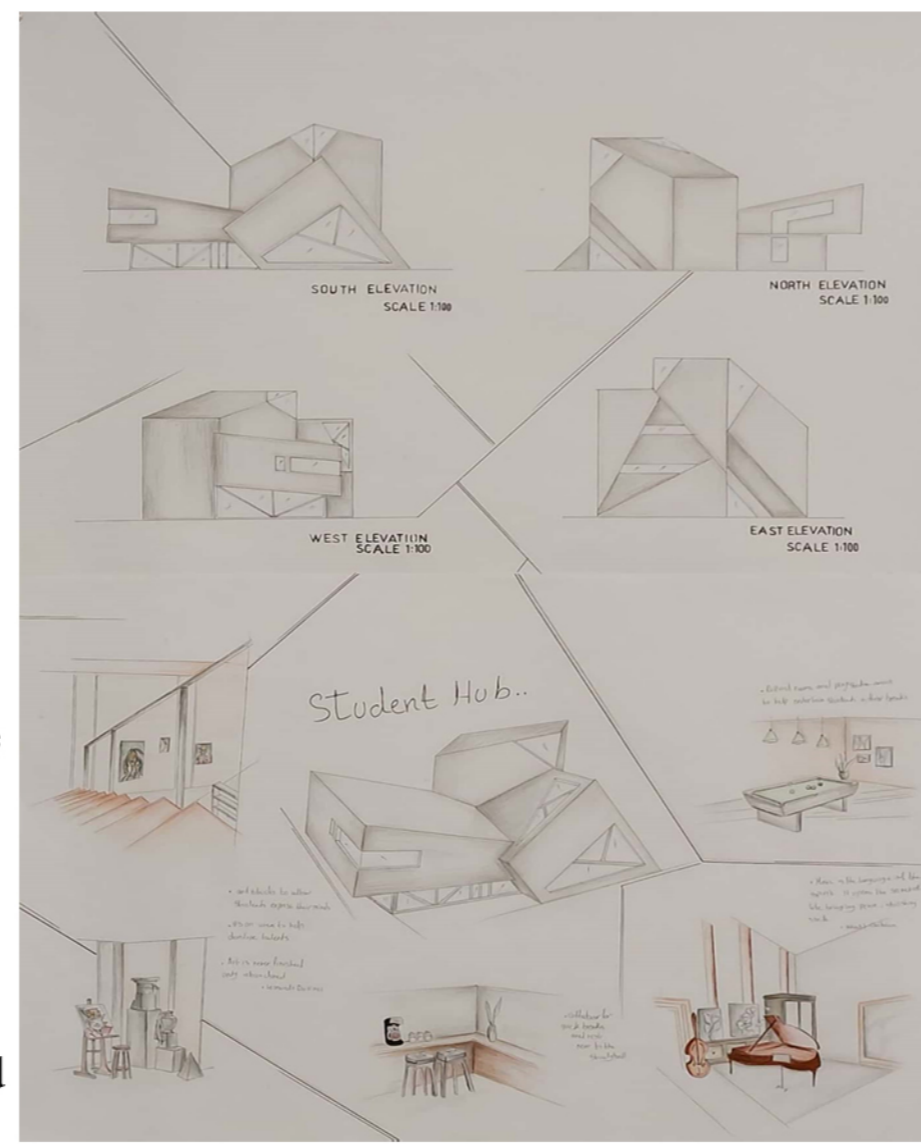
The student center or hub is an integral part of university life that provides services and amenities that students or campus members need in their daily life. Serving the important role as the campus's community centre, a student centre basically represents how the university treats and regards its students. It should be understood as a community centre at its best, reflecting the range of programs, activities, services and accomplishments available for students. A student centre is best explained as a physical facility that makes possible an informal program that complements the university's formal academic program. The concept of the student center has grown out of as a social centre and hub of student affairs on campus. It is provided as an integral part of university life as part of the educational program of the college and is a common meeting ground. Such facility is normally intended to create opportunities for connection and community building among students, and probably between students and staff by offering meeting and socializing space of a variety of sizes and types. Numerous terraces, seating areas, gathering spaces, and study lounges are located throughout the facility both inside and outside. Additionally, a batch of services including retails, printing and copying services, restaurants, study areas, meeting rooms, and activity halls are also to be presented.

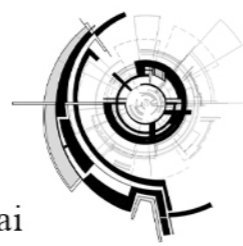




### PROJECT DESCRIPTION

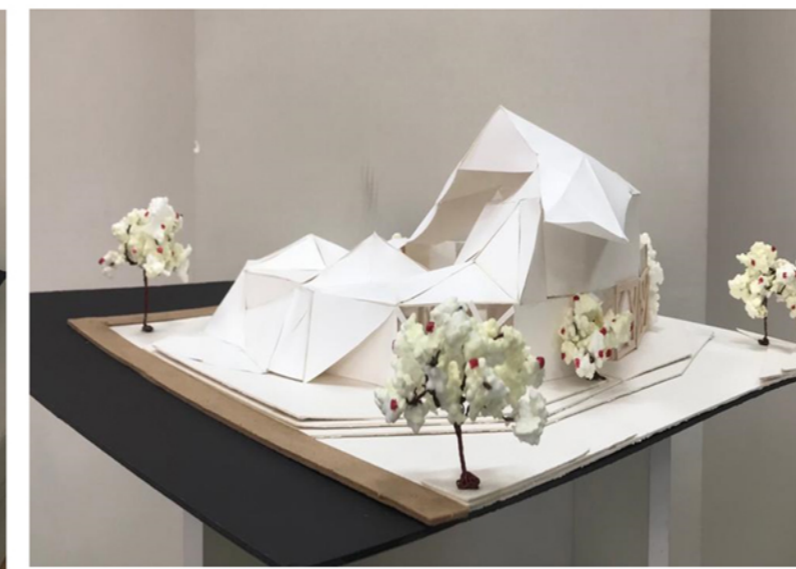
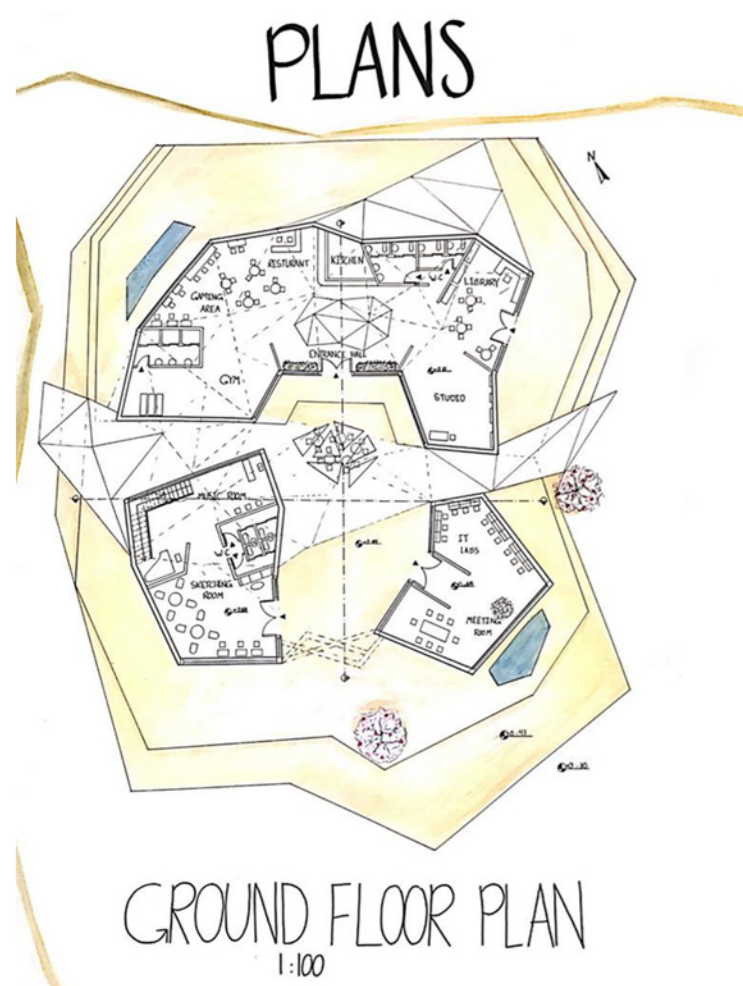
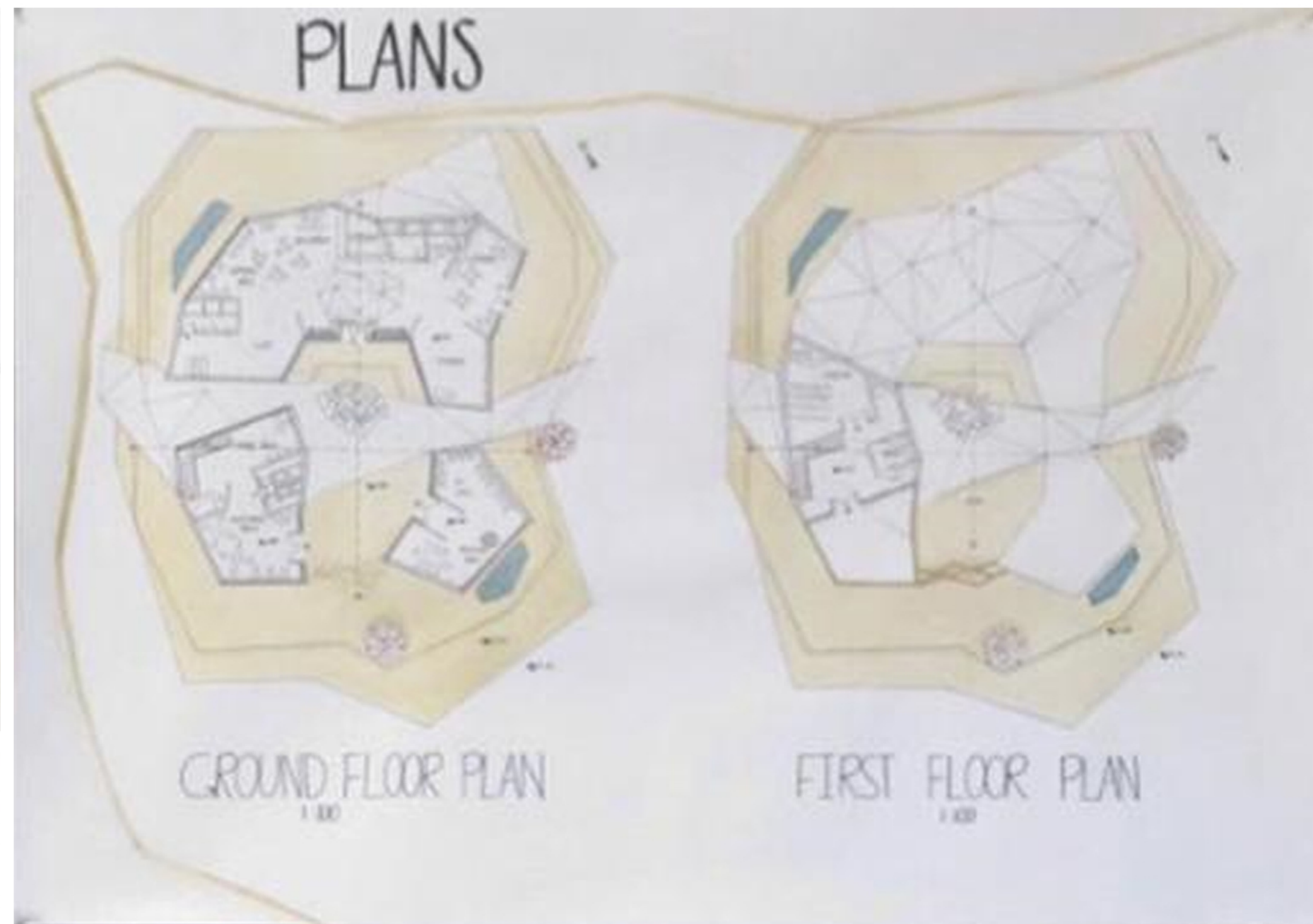
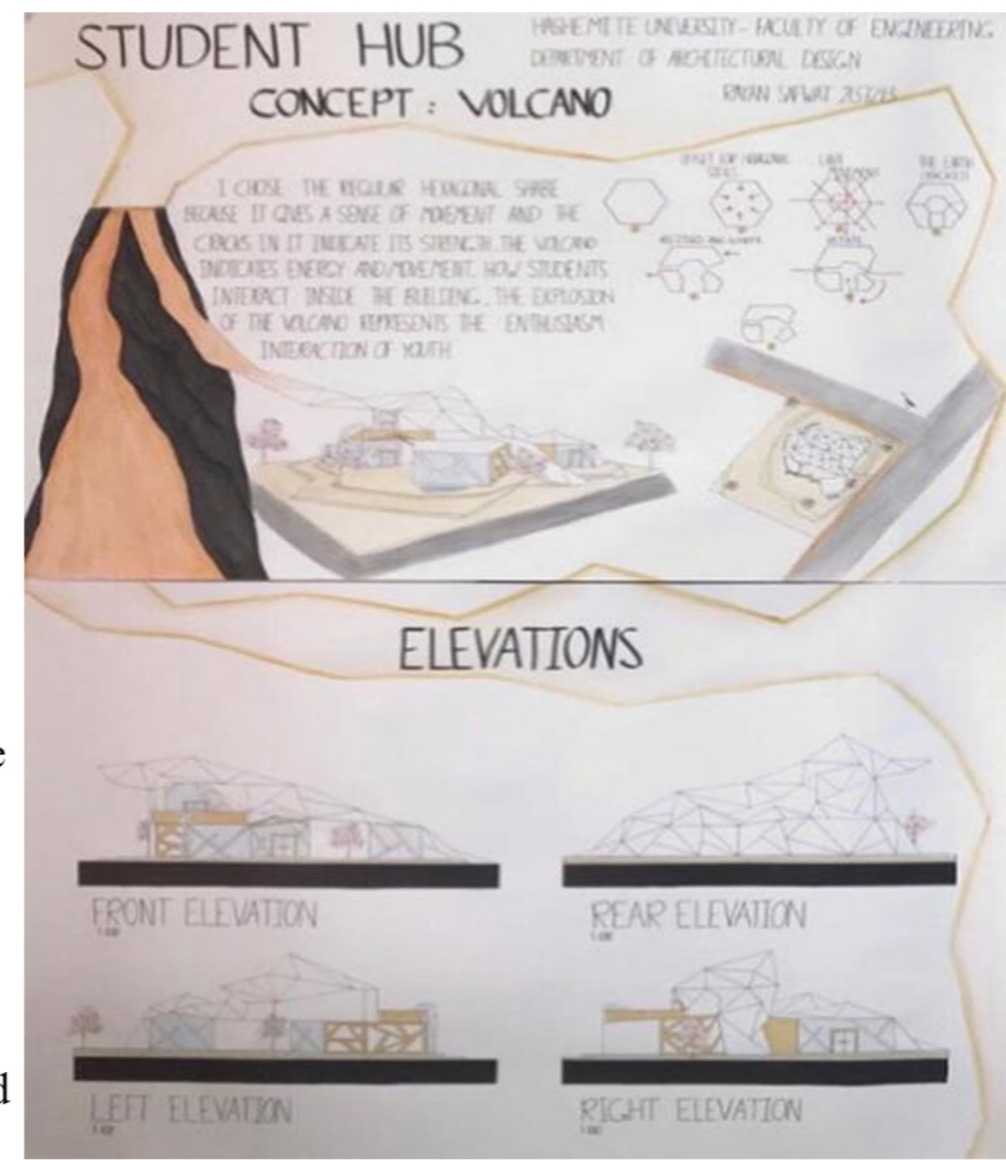
The student center or hub is an integral part of university life that provides services and amenities that students or campus members need in their daily life. Serving the important role as the campus's community centre, a student centre basically represents how the university treats and regards its students. It should be understood as a community centre at its best, reflecting the range of programs, activities, services and accomplishments available for students. A student centre is best explained as a physical facility that makes possible an informal program that complements the university's formal academic program. The concept of the student center has grown out of as a social centre and hub of student affairs on campus. It is provided as an integral part of university life as part of the educational program of the college and is a common meeting ground. Such facility is normally intended to create opportunities for connection and community building among students, and probably between students and staff by offering meeting and socializing space of a variety of sizes and types. Numerous terraces, seating areas, gathering spaces, and study lounges are located throughout the facility both inside and outside. Additionally, a batch of services including retails, printing and copying services, restaurants, study areas, meeting rooms, and activity halls are also to be presented.

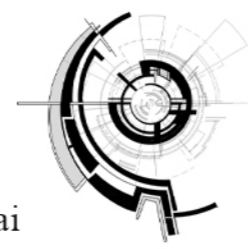




### PROJECT DESCRIPTION

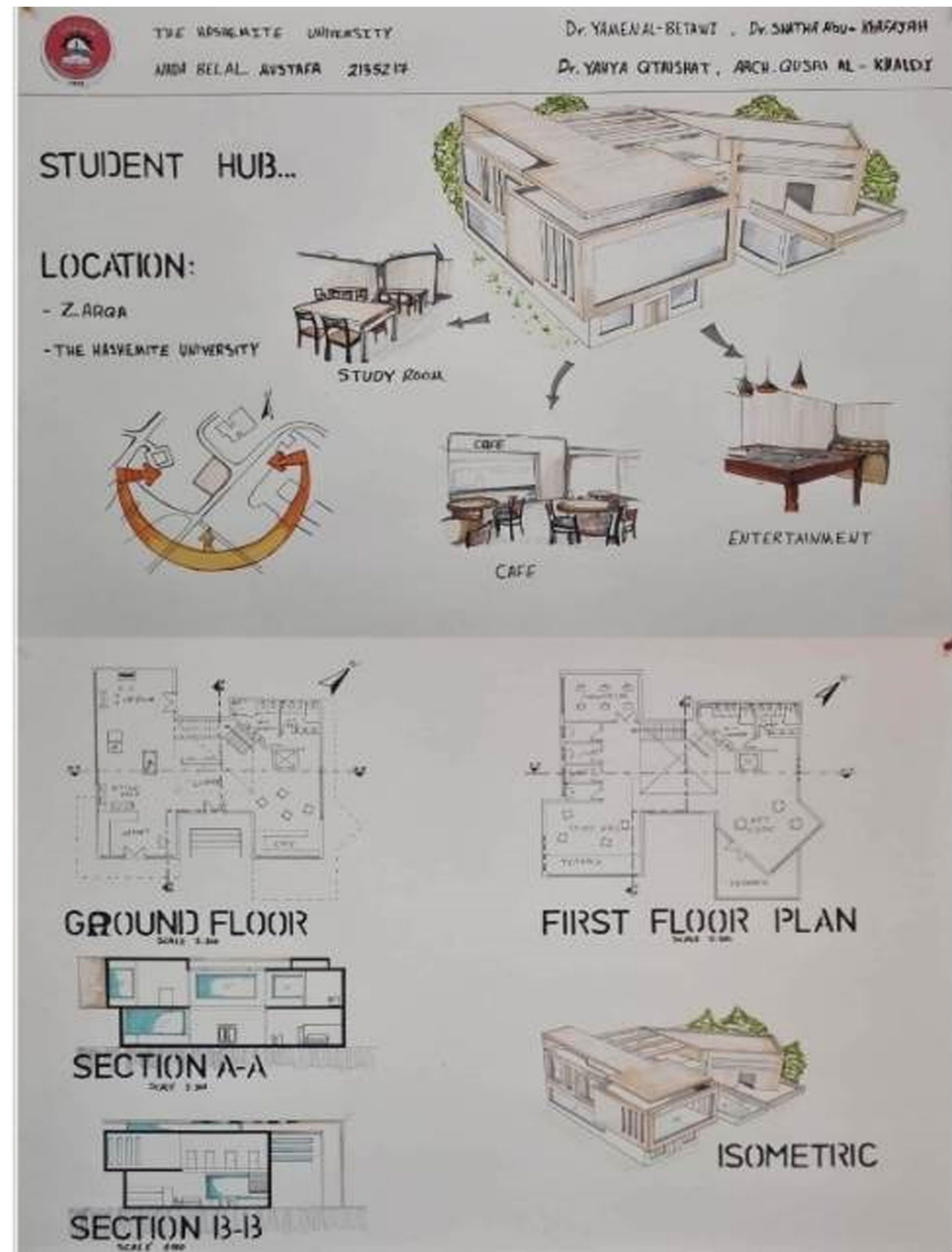
The student center or hub is an integral part of university life that provides services and amenities that students or campus members need in their daily life. Serving the important role as the campus's community centre, a student centre basically represents how the university treats and regards its students. It should be understood as a community centre at its best, reflecting the range of programs, activities, services and accomplishments available for students. A student centre is best explained as a physical facility that makes possible an informal program that complements the university's formal academic program. The concept of the student center has grown out of as a social centre and hub of student affairs on campus. It is provided as an integral part of university life as part of the educational program of the college and is a common meeting ground. Such facility is normally intended to create opportunities for connection and community building among students, and probably between students and staff by offering meeting and socializing space of a variety of sizes and types. Numerous terraces, seating areas, gathering spaces, and study lounges are located throughout the facility both inside and outside. Additionally, a batch of services including retails, printing and copying services, restaurants, study areas, meeting rooms, and activity halls are also to be presented.





### PROJECT DESCRIPTION

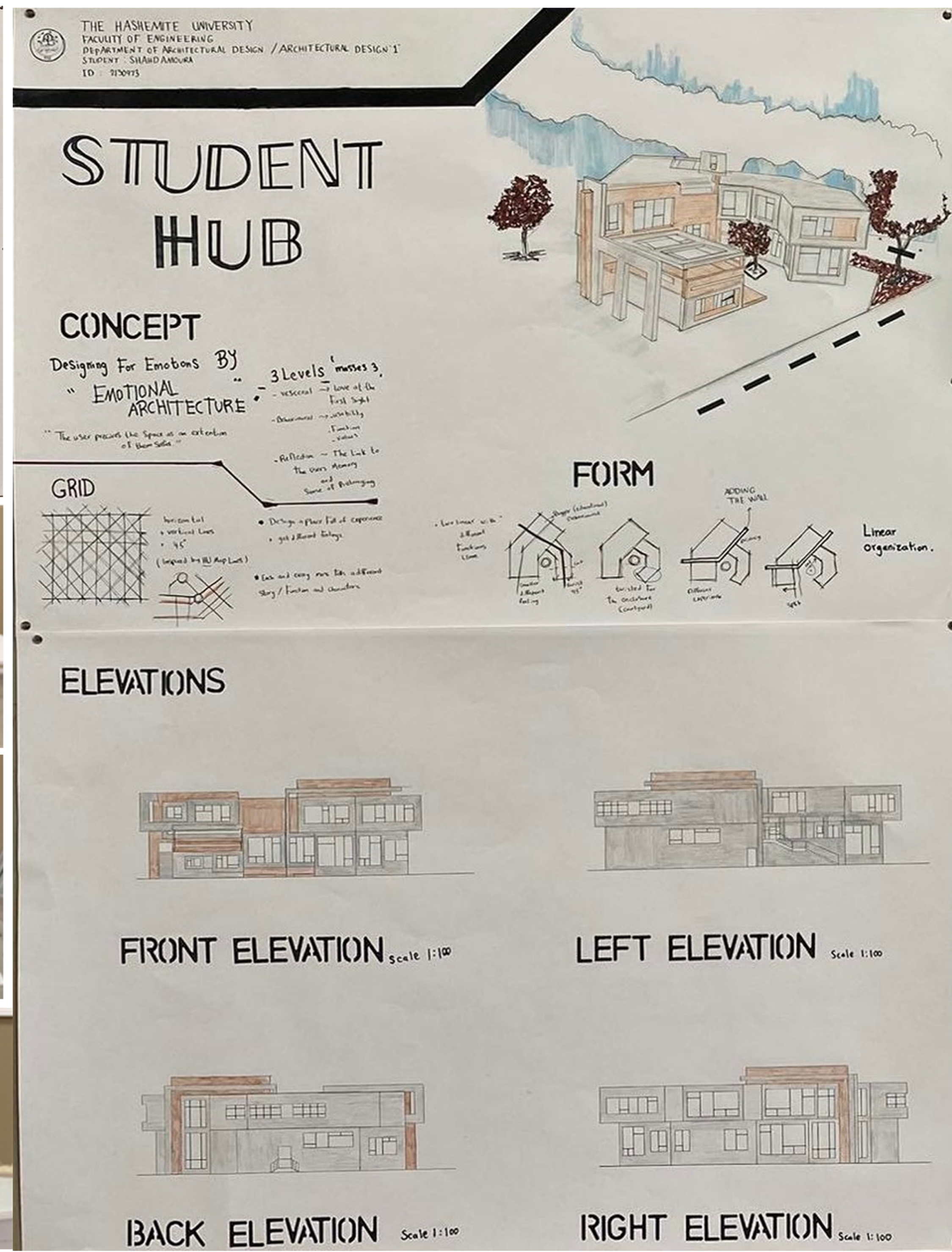
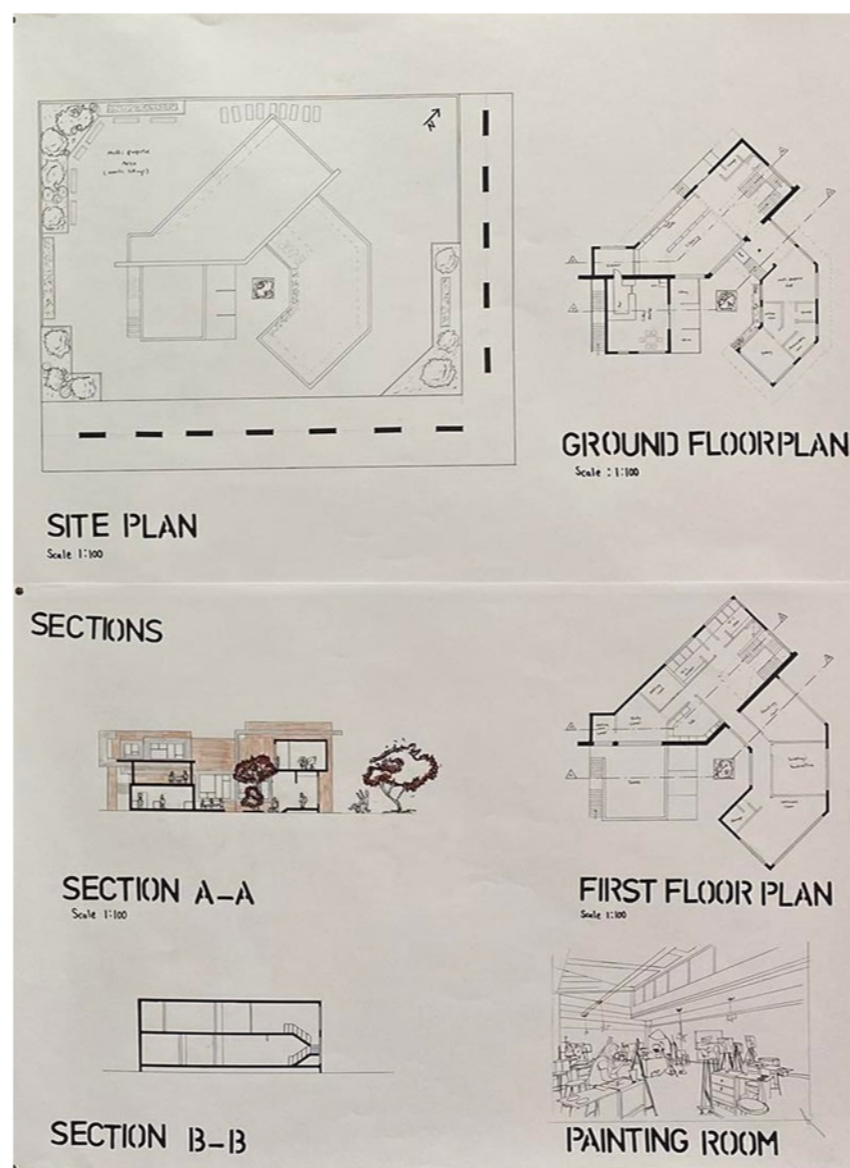
The student center or hub is an integral part of university life that provides services and amenities that students or campus members need in their daily life. Serving the important role as the campus's community centre, a student centre basically represents how the university treats and regards its students. It should be understood as a community centre at its best, reflecting the range of programs, activities, services and accomplishments available for students. A student centre is best explained as a physical facility that makes possible an informal program that complements the university's formal academic program. The concept of the student center has grown out of as a social centre and hub of student affairs on campus. It is provided as an integral part of university life as part of the educational program of the college and is a common meeting ground. Such facility is normally intended to create opportunities for connection and community building among students, and probably between students and staff by offering meeting and socializing space of a variety of sizes and types. Numerous terraces, seating areas, gathering spaces, and study lounges are located throughout the facility both inside and outside. Additionally, a batch of services including retails, printing and copying services, restaurants, study areas, meeting rooms, and activity halls are also to be presented.

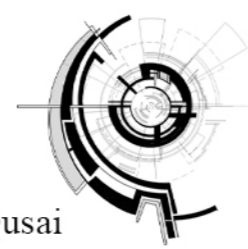




### PROJECT DESCRIPTION

The student center or hub is an integral part of university life that provides services and amenities that students or campus members need in their daily life. Serving the important role as the campus's community centre, a student centre basically represents how the university treats and regards its students. It should be understood as a community centre at its best, reflecting the range of programs, activities, services and accomplishments available for students. A student centre is best explained as a physical facility that makes possible an informal program that complements the university's formal academic program. The concept of the student center has grown out of as a social centre and hub of student affairs on campus. It is provided as an integral part of university life as part of the educational program of the college and is a common meeting ground. Such facility is normally intended to create opportunities for connection and community building among students, and probably between students and staff by offering meeting and socializing space of a variety of sizes and types. Numerous terraces, seating areas, gathering spaces, and study lounges are located throughout the facility both inside and outside. Additionally, a batch of services including retails, printing and copying services, restaurants, study areas, meeting rooms, and activity halls are also to be presented.





### PROJECT DESCRIPTION

The student center or hub is an integral part of university life that provides services and amenities that students or campus members need in their daily life. Serving the important role as the campus's community centre, a student centre basically represents how the university treats and regards its students. It should be understood as a community centre at its best, reflecting the range of programs, activities, services and accomplishments available for students. A student centre is best explained as a physical facility that makes possible an informal program that complements the university's formal academic program. The concept of the student center has grown out of as a social centre and hub of student affairs on campus. It is provided as an integral part of university life as part of the educational program of the college and is a common meeting ground. Such facility is normally intended to create opportunities for connection and community building among students, and probably between students and staff by offering meeting and socializing space of a variety of sizes and types. Numerous terraces, seating areas, gathering spaces, and study lounges are located throughout the facility both inside and outside. Additionally, a batch of services including retails, printing and copying services, restaurants, study areas, meeting rooms, and activity halls are also to be presented.

